



**E & A CONSULTING GROUP, INC.**

*Engineering Answers*

10909 Mill Valley Road, Suite 100 • Omaha, NE 68154-3950  
P 402.895.4700 • F 402.895.3599  
[www.eacg.com](http://www.eacg.com)

Dear Homeowner:

The SID has contracted concrete work to be done on the streets in your SID. A contractor will be on site to do work which includes removing the existing concrete that is damaged and replacing it with new pavement.

Throughout the course of this project, there could be some minimal damage done to yards and or sprinkler systems. The contractor that is on site will be responsible for replacing any damaged sprinkler lines and/or heads. They will also be replacing any sod that is torn up while on site. Once the new sod is laid, it will be the responsibility of the homeowner at each lot to water the new sod until it has re-established itself.

Before starting the work on site, each contractor must put in a call and have all the utilities in the area located. You might notice some areas in your yard that have been flagged and/or spray painted. This does not indicate the area in which they will be working. It is just to give them an idea of what kind of utilities are in the area that could possibly be hit while the contractor is on site working.

All work that is completed in public Right-of-Way and follow City of Omaha and Sarpy County specifications.

The work in your SID should not take longer than 30 days to complete. Please let me know if you have any questions or concerns on this at all.

Thank You,

A handwritten signature in black ink, appearing to read 'Nelson C Flores', written over a horizontal line.

**Nelson C Flores**

Construction Administration Tech.

***Engineering Answers***...by assisting our clients

E & A Consulting Group, Inc.  
10909 Mill Valley Road, Suite 100 • Omaha, NE 68154  
402.895.4700 (o)  
[eacg.com](http://eacg.com)



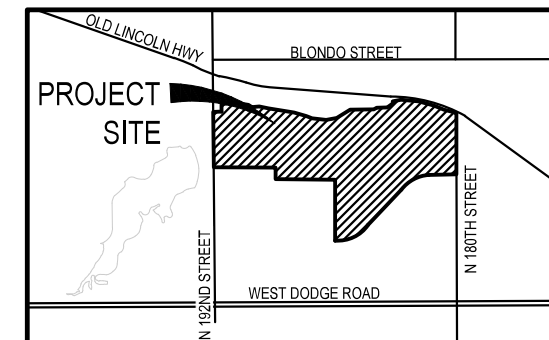
APPROXIMATE BID QUANTITIES

ITEM	DESCRIPTION	QUANTITY	UNIT
1	CONCRETE PAVEMENT REPAIR, LARGE AREA	1,375	SY
2	CONCRETE PAVEMENT REPAIR, SMALL AREA	592	SY
3	FULL DEPTH SAW CUT EXISTING PAVEMENT	2,192	LF
4	REMOVE AND REPLACE PCC SIDEWALK	2,175	SF
5	REMOVE AND REPLACE FAULTY SUBGRADE	25	TN
6	ADJUST SPRINKLER (AS NEEDED)	1	EA
A	REMOVE AND REPLACE PCC CURB RAMP	51	SF
B	CONSTRUCT DETECTABLE WARNING PANEL (1 location)	8	SF

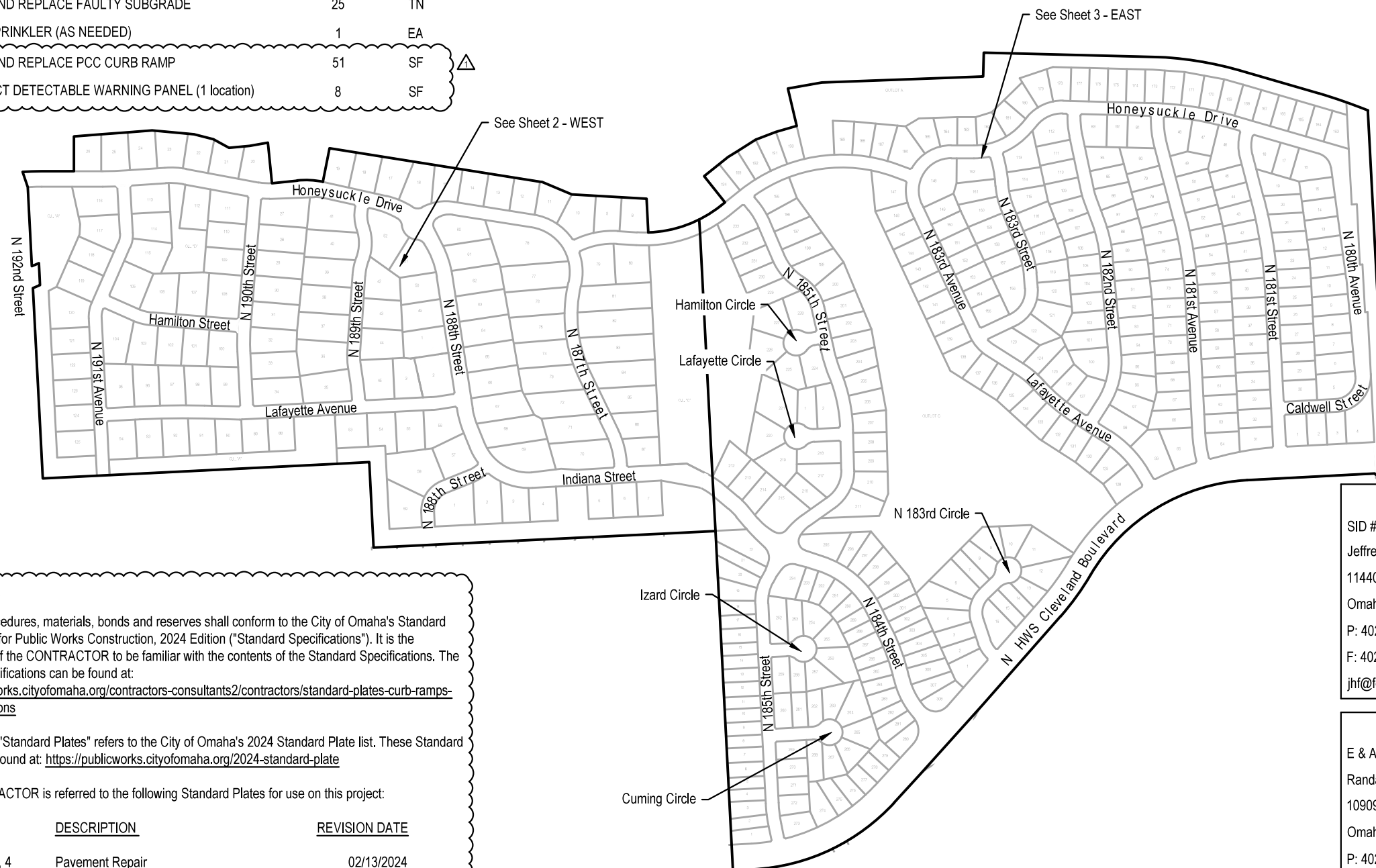
# SILVERLEAF ESTATES / WEST DODGE STATION

## 2024 STREET RECONSTRUCTION

SID NO. 503  
DOUGLAS COUNTY, NEBRASKA



VICINITY MAP



INDEX OF SHEETS

SHEET NO.	DESCRIPTION
1	COVER
2	WEST
3	EAST
4	TOTAL QUANTITIES
5	COMPOSITE



NOTE TO BIDDERS

- All project procedures, materials, bonds and reserves shall conform to the City of Omaha's Standard Specifications for Public Works Construction, 2024 Edition ("Standard Specifications"). It is the responsibility of the CONTRACTOR to be familiar with the contents of the Standard Specifications. The Standard Specifications can be found at: <https://publicworks.cityofomaha.org/contractors-consultants2/contractors/standard-plates-curb-ramps-and-specifications>
- References to "Standard Plates" refers to the City of Omaha's 2024 Standard Plate list. These Standard Plates can be found at: <https://publicworks.cityofomaha.org/2024-standard-plate>

The CONTRACTOR is referred to the following Standard Plates for use on this project:

PLATE NO.	DESCRIPTION	REVISION DATE
1002-02-1, 3, 4	Pavement Repair	02/13/2024
504-01-1	Concrete Curb Ramp	02/13/2024

APPLICANT

SID # 503  
Jeffrey Penne, Chairman  
11440 West Center Road, Ste. C  
Omaha, NE 68144  
P: 402.334.0700  
F: 402.334.0815  
jhf@fdjlw.com

DESIGNER

E & A Consulting Group, Inc  
Teresa Wooten, P.E.  
10909 Mill Valley Road, Suite 100  
Omaha, NE 68154  
P: 402.895.4700  
F: 402.895.3599  
twooten@eacg.com

INSPECTOR

E & A Consulting Group, Inc  
Randall L. Pierce, P.E.  
10909 Mill Valley Road, Suite 100  
Omaha, NE 68154  
P: 402.895.4700  
F: 402.895.3599  
rpierce@eacg.com

CONTRACTOR

Swain Construction, Inc.  
Scott Warren  
6002 N 89th Circle  
Omaha, NE 68134  
P: 402.571.1110  
F: 402.571.3667  
michelle@swainomaha.com

E & A CONSULTING GROUP, INC.  
Engineering • Planning • Environmental & Field Services



SILVERLEAF ESTATES / WEST DODGE STATION  
2024 STREET RECONSTRUCTION  
SID 503  
DOUGLAS COUNTY, NEBRASKA

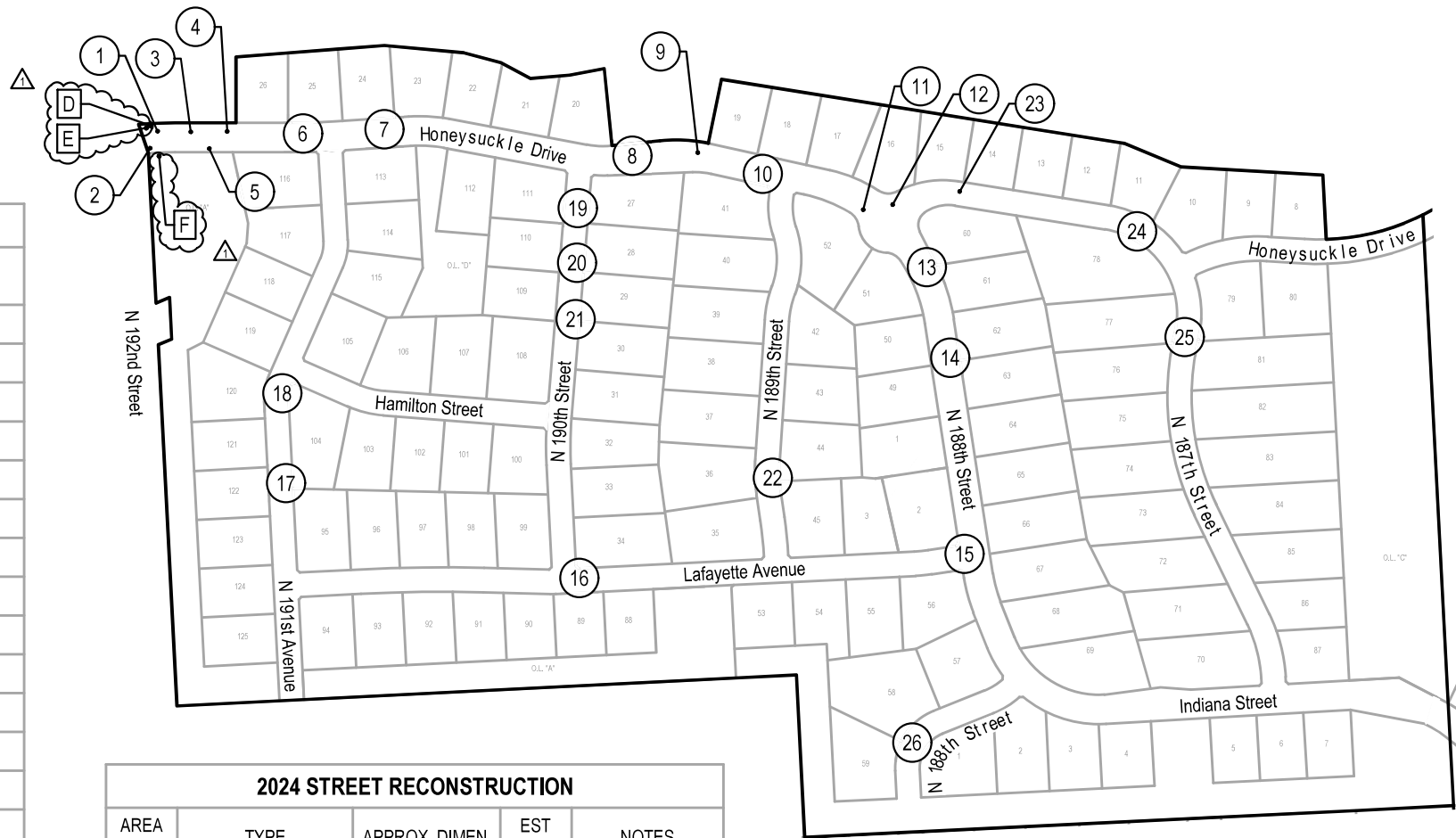
COVER

Revisions	Date	Description
1	4/09/2024	REVISION 1

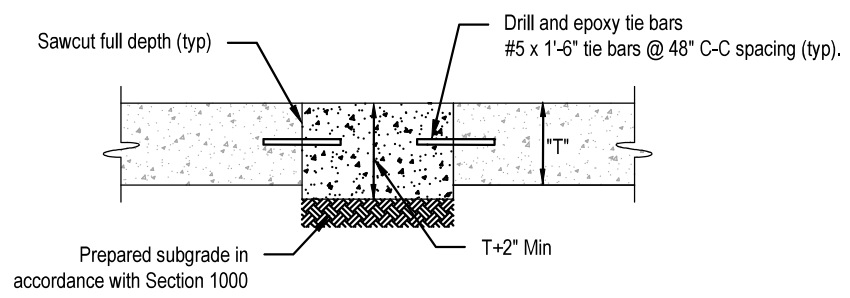
Proj No: E2003144/028  
Date: 2/26/2024  
Designed By: TMM  
Drawn By: JME  
Scale: 1" = 400'  
Sheet: 1 of 5



2024 STREET RECONSTRUCTION									
AREA NO.	NO. POURS	SAW CUT L.F.	CURB L.F.	WIDTH	X	LENGTH	LARGE AREA EST S.Y.	SMALL AREA EST S.Y.	NOTES
1	1	145	120	12.5	x	120.0	166.7		
2	1	40	15	12.5	x	15.0		20.8	
3	1	40	15	12.5	x	15.0		20.8	
4	1	55	30	12.5	x	30.0		41.7	
5	1	45	20	20.0	x	20.0		44.4	
6	1	40	15	12.5	x	15.0		20.8	
7	1	26	20	3.0	x	20.0		6.7	Curb Inlet Throat
8	1	40	15	12.5	x	15.0		20.8	
9	1	40	15	12.5	x	15.0		20.8	
10	1	40	15	12.5	x	15.0		20.8	
11	1	40	15	12.5	x	15.0		20.8	
12	1	40	15	12.5	x	15.0		20.8	
13	1	85	60	12.5	x	60.0	83.3		
14	1	55	30	12.5	x	30.0		41.7	
15	1	55	30	12.5	x	30.0		41.7	
16	1	20	15	10.0	x	10.0		11.1	
17	2	85	90	12.5	x	60.0	83.3		
				12.5	x	30.0	41.7		
18	1	115	30	12.5	x	90.0	125.0		
19	2	50	30	15.0	x	25.0		41.7	
20	1	40	9	12.5	x	9.0		12.5	
21	1	16	10	3.0	x	16.0		5.3	Curb Inlet Throat
22	2	80	30	12.5	x	15.0		20.8	
				12.5	x	15.0	20.8		
23	1	55	30	12.5	x	30.0		41.7	
24	1	70	45	12.5	x	70.0	97.2		
25	1	70	45	12.5	x	45.0	62.5		
26	2	95	45	15.0	x	25.0	41.7		
				12.7	x	17.0	24.0		



2024 STREET RECONSTRUCTION					
AREA NO.	TYPE	APPROX. DIMEN.	EST S.F.	NOTES	
D	Sidewalk	5.5 x 189	1039.5		
E	Curb Ramp	5 x 10.3	51.3	ADA Plate - Cast Iron	
F	Sidewalk	5.5 x 189	1039.5		



**SMALL AREA CONCRETE PAVEMENT REPAIR DETAIL**  
NOT TO SCALE



**E & A CONSULTING GROUP, INC.**  
Engineering • Planning • Environmental & Field Services

10309 Mill Valley Road, Suite 100 • Omaha, NE 68154  
Phone: 402.265.4700 • Fax: 402.265.2559  
www.eaconsulting.com  
State of NE Certificate of Authorization #CA0008

**E & A CONSULTING GROUP, INC.**  
Engineering Answers

SILVERLEAF ESTATES /  
WEST DODGE STATION  
2024 STREET RECONSTRUCTION

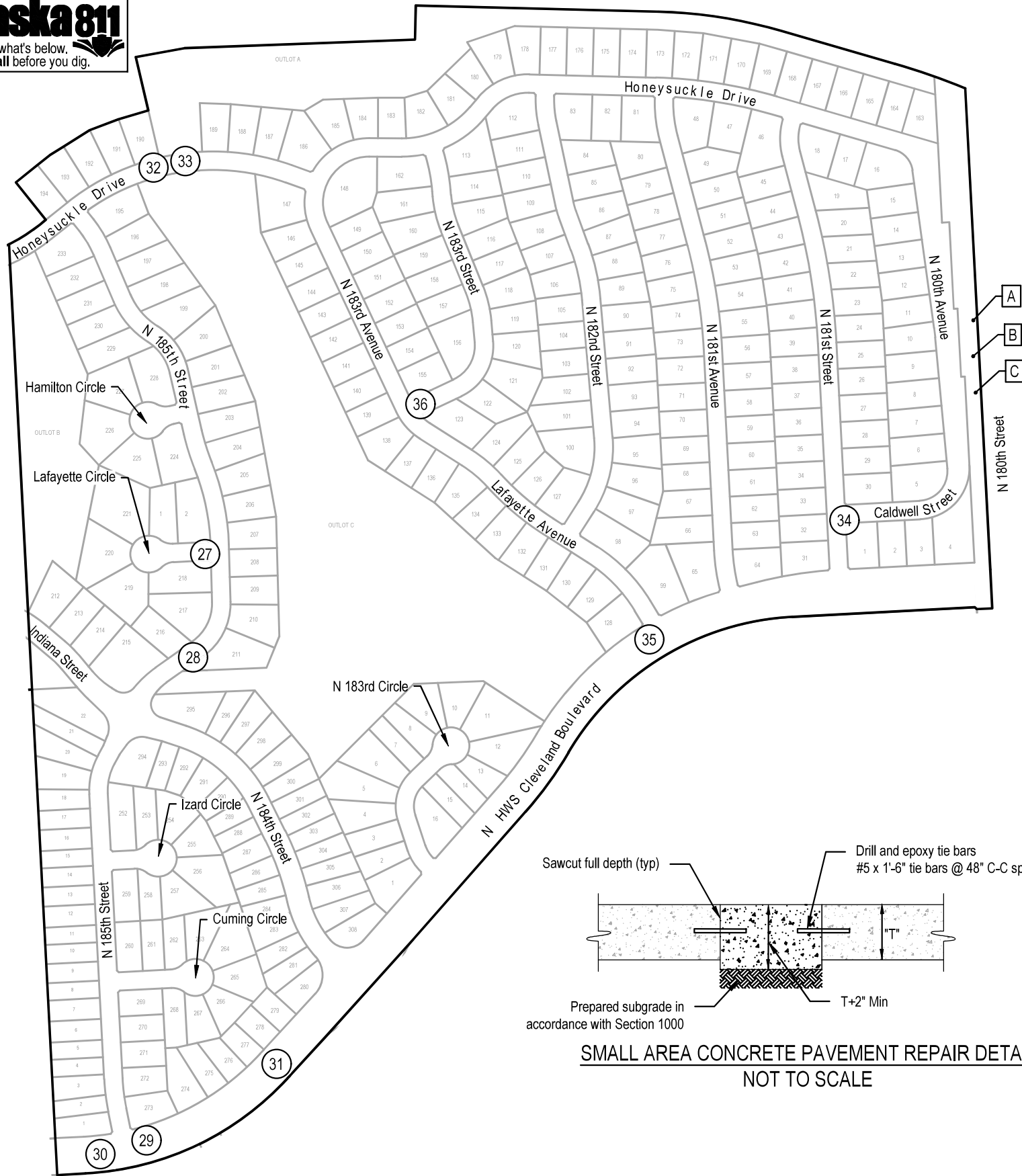
SID 503  
DOUGLAS COUNTY, NEBRASKA

**WEST**

Proj No: E2003144/028  
Date: 2/26/2024  
Designed By: TMM  
Drawn By: JME  
Scale: T = 3/8" = 1'  
Sheet: 2 of 4

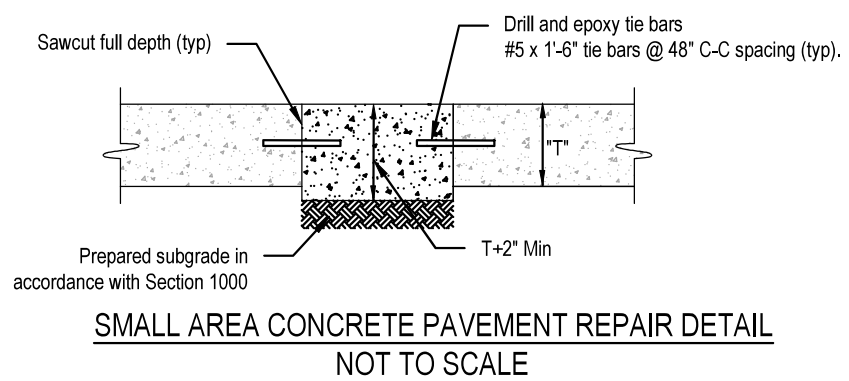
Revisions  
Date Description  
4/09/2024 REVISION 1

4/15/2024 11:43 AM K:\Projects\2003144\p29\Engineering\CAD Files\Silverleaf Estates - West Dodge Station 2024 Street Reconstruction-000.dwg  
Jessica Brown



2024 STREET RECONSTRUCTION									
AREA NO.	NO. POURS	SAW CUT L.F.	CURB L.F.	WIDTH	X	LENGTH	LARGE AREA EST S.Y.	SMALL AREA EST S.Y	NOTES
27	1	85	60	12.5	x	60.0	83.3		
28	1	40	15	12.5	x	15.0		20.8	
29	1	40	15	12.5	x	15.0		20.8	
30	2	205	180	12.8	x	130.0	184.2		
				12.5	x	80.0	111.1		
31	1	40	15	12.8	x	15.0		21.3	
32	1	70	45	12.5	x	45.0	62.5		
33	1	115	90	12.5	x	90.0	125.0		
34	1	20	10	10.0	x	10.0		11.1	
35	1	45	15	12.8	x	15.0		21.3	
36	2	50	60	25.0	x	30.0	83.3		

2024 STREET RECONSTRUCTION					
AREA NO.	TYPE	APPROX. DIMEN.		EST S.F.	NOTES
A	Sidewalk	4	x 8	32.0	
B	Sidewalk	4	x 8	32.0	
C	Sidewalk	4	x 8	32.0	





2024 STREET RECONSTRUCTION									
AREA NO.	NO. POURS	SAW CUT L.F.	CURB L.F.	WIDTH	X	LENGTH	LARGE AREA EST S.Y.	SMALL AREA EST S.Y.	NOTES
1	1	145	120	12.5	x	120.0	166.7		
2	1	40	15	12.5	x	15.0		20.8	
3	1	40	15	12.5	x	15.0		20.8	
4	1	55	30	12.5	x	30.0		41.7	
5	1	45	20	20.0	x	20.0		44.4	
6	1	40	15	12.5	x	15.0		20.8	
7	1	26	20	3.0	x	20.0		6.7	Curb Inlet Throat
8	1	40	15	12.5	x	15.0		20.8	
9	1	40	15	12.5	x	15.0		20.8	
10	1	40	15	12.5	x	15.0		20.8	
11	1	40	15	12.5	x	15.0		20.8	
12	1	40	15	12.5	x	15.0		20.8	
13	1	85	60	12.5	x	60.0	83.3		
14	1	55	30	12.5	x	30.0		41.7	
15	1	55	30	12.5	x	30.0		41.7	
16	1	20	15	10.0	x	10.0		11.1	
17	2	85	90	12.5	x	60.0	83.3		
				12.5	x	30.0	41.7		
18	1	115	30	12.5	x	90.0	125.0		
19	2	50	30	15.0	x	25.0		41.7	
20	1	40	9	12.5	x	9.0		12.5	
21	1	16	10	3.0	x	16.0		5.3	Curb Inlet Throat
22	2	80	30	12.5	x	15.0		20.8	
				12.5	x	15.0		20.8	
23	1	55	30	12.5	x	30.0		41.7	
24	1	70	45	12.5	x	70.0	97.2		
25	1	70	45	12.5	x	45.0	62.5		
26	2	95	45	15.0	x	25.0	41.7		
				12.7	x	17.0	24.0		
27	1	85	60	12.5	x	60.0	83.3		
28	1	40	15	12.5	x	15.0		20.8	
29	1	40	15	12.5	x	15.0		20.8	
30	2	205	180	12.8	x	130.0	184.2		
				12.5	x	80.0	111.1		


2024 STREET RECONSTRUCTION									
AREA NO.	NO. POURS	SAW CUT L.F.	CURB L.F.	WIDTH	X	LENGTH	LARGE AREA EST S.Y.	SMALL AREA EST S.Y.	NOTES
31	1	40	15	12.8	x	15.0		21.3	
32	1	70	45	12.5	x	45.0	62.5		
33	1	115	90	12.5	x	90.0	125.0		
34	1	20	10	10.0	x	10.0		11.1	
35	1	45	15	12.8	x	15.0		21.3	
36	2	50	60	25.0	x	30.0	83.3		

2024 STREET RECONSTRUCTION					
AREA NO.	TYPE	APPROX. DIMEN.		EST S.F.	NOTES
A	Sidewalk	4	x 8	32.0	
B	Sidewalk	4	x 8	32.0	
C	Sidewalk	4	x 8	32.0	
D	Sidewalk	5.5	x 189	1039.5	
E	Curb Ramp	5	x 10.3	51.3	ADA Plate - Cast Iron
F	Sidewalk	5.5	x 189	1039.5	



<b>E &amp; A CONSULTING GROUP, INC.</b> Engineering • Planning • Environmental & Field Services <small>10809 Mill Valley Road, Suite 100 • Omaha, NE 68154          Phone: 402.265.4700 • Fax: 402.265.2559          www.eaeg.com          State of NE Certificate of Authorization #CA0008</small>	 <b>E &amp; A CONSULTING GROUP, INC.</b> Engineering Answers	<b>SILVERLEAF ESTATES / WEST DODGE STATION</b> <b>2024 STREET RECONSTRUCTION</b> <small>SID 503          DOUGLAS COUNTY, NEBRASKA</small>						
<b>TOTAL QUANTITIES</b>								
Proj No: P2003144/028 Date: 2/26/2024 Designed By: TMM Drawn By: JMB Scale: N/A Sheet: 4 of 5	Revisions <table border="1" style="width: 100%; border-collapse: collapse;"> <tr> <th style="width: 5%;">No.</th> <th style="width: 15%;">Date</th> <th style="width: 80%;">Description</th> </tr> <tr> <td>1</td> <td>4/16/2024</td> <td>REVISION 1</td> </tr> </table>	No.	Date	Description	1	4/16/2024	REVISION 1	4/15/2024 11:43 AM K:\Projects\2003144\p29\Engineering\CAD Files\Paving\Silverleaf Estates - West Dodge Station 2024 Street Reconstruction-000.dwg Jessica Brown
No.	Date	Description						
1	4/16/2024	REVISION 1						



<b>E &amp; A CONSULTING GROUP, INC.</b> Engineering • Planning • Environmental & Field Services <small>10309 Mill Valley Road, Suite 100 • Omaha, NE 68154          Phone: 402.265.4700 • Fax: 402.265.2559          www.eag.com          State of NE Certificate of Authorization #CA0008</small>										
 <b>E &amp; A CONSULTING GROUP, INC.</b> Engineering Answers										
<b>SILVERLEAF ESTATES / WEST DODGE STATION 2024 STREET RECONSTRUCTION</b> <small>SID 503          DOUGLAS COUNTY, NEBRASKA</small>										
<b>COMPOSITE</b>										
Revisions <table border="1"> <tr> <th>Rev</th> <th>Date</th> <th>Description</th> </tr> <tr> <td>1</td> <td>2/26/2024</td> <td>TAM</td> </tr> <tr> <td>2</td> <td>4/09/2024</td> <td>REVISION 1</td> </tr> </table>	Rev	Date	Description	1	2/26/2024	TAM	2	4/09/2024	REVISION 1	Proj No: E2003144/028 Date: 2/26/2024 Designed By: TAM Drawn By: JMB Scale: 1" = 40' Sheet: 5 of 5
Rev	Date	Description								
1	2/26/2024	TAM								
2	4/09/2024	REVISION 1								